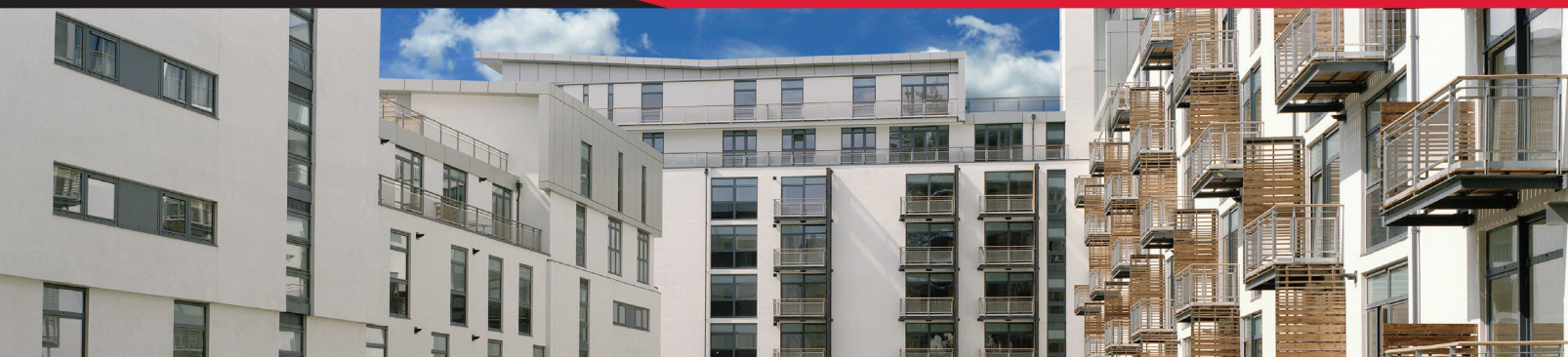


DRYVIT OUTSULATION® RAIL

Moisture Drainage Exterior Insulation & Finishing System



System Overview

Dryvit's Outsulation Rail is a moisture drainage exterior insulation and finishing system (EIFS) suitable for use on either new construction or refurbishment projects. This system is based on a simple premise...insulation is more effective when placed on the exterior of a building.

Due to the increased demands for wall systems to be able to drain away incidental moisture, Outsulation Rail has been developed to incorporate a drained cavity.

By bringing insulation to the outside of external walls, these moisture drainage EIFS eliminate thermal bridges; stabilise interior environments; minimise thermal shock; and expand upon the proven weatherability of Outsulation by adding a second line of defence against air, moisture and weather.



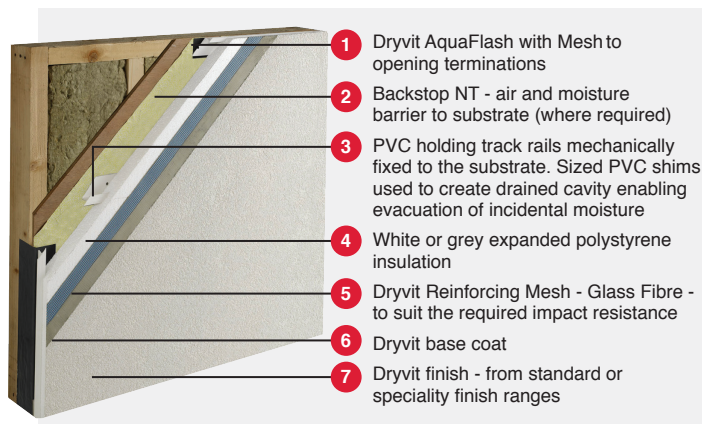
Benefits

- **Fire performance.** Outsulation Rail is tested in accordance with BS 8414-1 and 2 and classified as meeting the performance requirements of BR 135.
- **Energy efficiency.** Outsulation Rail enables new or existing buildings to meet strict energy efficiency requirements. The option to incorporate high performance low lambda EPS assists in meeting the most demanding carbon management plan. Heating or cooling bills are significantly reduced.
- **Air & Moisture Barriers.** Dryvit's AquaFlash and Backstop NT weather-resistive membranes prevents water penetration and eliminates air infiltration. Unlike traditional woven sheet breather membranes they offer a faster and unhindered method of installing the Outsulation Rail holding track over sheathed substrates.
- **Moisture Drainage System.** The moisture drainage cavity removes incidental moisture that may enter the building envelope at terminations or penetrations.
- **Weatherability.** Dryvit EIFS provide the utmost in weather protection, providing a resilient barrier against the elements.
- **Durability.** The system provides unsurpassed long-term durability meeting design requirements for use in virtually any location.
- **Aesthetics and design freedom.** Dryvit finishes are available in a wide array of textures in both standard and custom colours. Our speciality finishes enable designers to replicate a variety of real stone or brick finishes from limestone to granite at a fraction of the cost. Outsulation Rail can be installed over a variety of substrates and can be grooved to form various shapes and surface patterns.
- **Cost effective.** Outsulation Rail is easily adapted to complex project details. Installation is rapid, and routine maintenance is minimal.
- **Testing.** Independently certified by BBA and other international test bodies. Dryvit manufacturing plants are ISO 9001 certified, demonstrating the highest standards of quality and consistency.



DRYVIT OUTSULATION® RAIL SYSTEM

A mechanically fastened rail external wall insulation system incorporating a drained cavity, sized to meet project requirements, and air & moisture protective membranes (where required) with EPS 70E grade expanded polystyrene (EPS) insulation. Subject of British Board of Agrément Certificate No. 98/3548.



SUBSTRATE TYPES

There are many construction materials, which can be utilised as effective substrates with the Outsulation Rail system on either solid or framed construction. Common substrates include, in-situ concrete, pre-cast concrete, blockwork, brick, render, Wimpey No-fines, exposed aggregate panels plus a wide range of sheathings carried on light gauge steel and timber framed structures.

For guidance on substrate tolerances and the correct fixing method to withstand the thermal stresses and wind loads to satisfy BS EN 1991-1-4 and BS EN 1990, please consult Dryvit UK Ltd.

APPLICATION

Application of the system is carried out by Specialist Installers employing operatives who have been trained in the use of Dryvit materials. In addition, Dryvit are committed to providing on site support to their network of Specialist Installers when called upon. Details of recommended Specialist Installers are available from Dryvit UK Ltd.

THERMAL PERFORMANCE

U-value and condensation risk calculations are carried out by Dryvit upon request to ensure that the correct thickness of insulation is specified for each project to meet target requirements. U-values calculations can then be incorporated within the buildings target SAP calculation.

Thermal conductivity values of insulation

Outsulation - white expanded polystyrene - 0.038 W/mK

grey expanded polystyrene - 0.031 or 0.032 W/mK

STANDARD DETAILS

Standard details are available for the Outsulation Rail systems and can be downloaded from www.dryvit.co.uk.

Dryvit offers a CAD service to produce bespoke details in line with specific project needs.

FINISHES

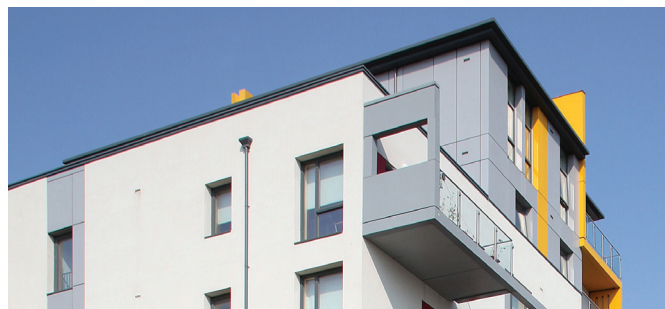
Dryvit 100% acrylic finishes contain aggregates of various sizes and use Proven Mildew Resistance (PMR) chemistry and are offered as standard with the Outsulation Rail System. HDP finishes are also available which incorporates hydrophobic technology to repel water, resulting in less dirt pick up, a cleaner wall appearance and lower maintenance. The standard finish range is available in six different textures with over 360 chart colours to select from. If your desired colour is not available from our standard finish range then we have a colour matching service that will be sure to satisfy your requirements.

Dryvit's range of Speciality Finishes enable designers to achieve various effects, like the look of granite in many shades, brickwork, wood, concrete and stone providing a lightweight equivalent to their natural alternative at a fraction of the cost.

STANDARD TEXTURE RANGE



SPECIALITY FINISHES



WARRANTY

- Standard 10 Year "Dryvit Warranty" available on all projects upon written request.
- 10 Year third party insurance backed warranties covering materials and installation - extended periods available.
- 'Back to Back' warranties available on request from partnering material suppliers and installers.

For more information on warranties please contact Dryvit UK Ltd. or visit our web site www.dryvit.co.uk



DRYVIT UK LTD

Unit 4 Wren Park, Hitchin Road,
Shefford, Bedfordshire SG17 5JD
Tel: 01462 819555 Fax: 01462 819556
Email: ukenquiries@dryvit.com www.dryvit.co.uk
©Dryvit UK Ltd. 2019

